



Karnatak University's,
KARNATAK SCIENCE COLLEGE, DHARWAD
NAAC Accredited



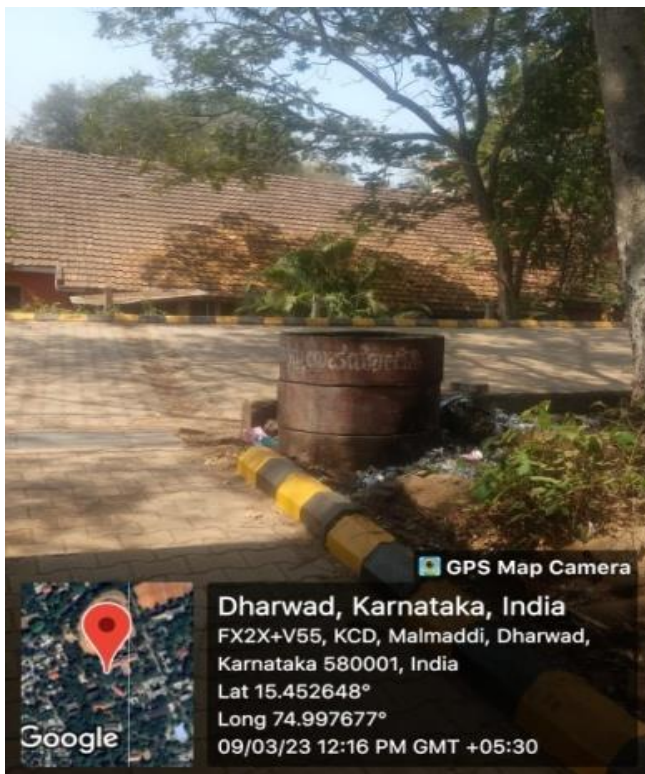
Phone No: 0836-2215410 & 2215400 Fax: 0836-2744334
Email: principal.kscd@gmail.com Web: www.kscd.ac.in

7.1.3 - Describe the facilities in the Institution for the management of the following types of degradable and non-degradable waste

- Solid waste management
- Liquid waste management
- Biomedical waste management
- E-waste management
- Waste recycling system
- Hazardous chemicals and radioactive waste management

The institute does not produce any significant hazardous waste material as precautions have been initiated to produce minimum waste and recycle it in the institute.

- **The solid materials** like papers, food stuff, plastics, glasses etc., are segregated as wet waste, dried waste, and solid substances (Bio degradable and non-biodegradable).

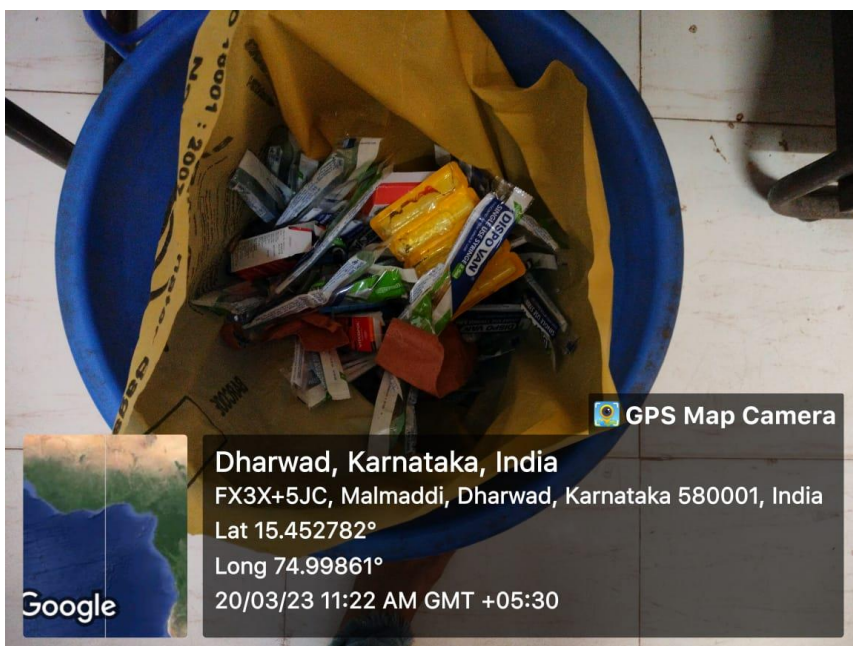


- **The biodegradable solid waste** substances are used to make organic fertilizers and used to maintain gardens in various departments. The plastic, glass and non-biodegradable substances are put it into designated place. The authorized people usually hired on the contract basis (Hubli-Dharwad Corporation) collect the solid wastes from the designated places

- Liquid Waste:** The **sewage water** generally does not contain any hazardous substances and is let into the drainage system. The **laboratory liquid waste** (Chemistry, Zoology, Microbiology, Biotechnology) Or if any experiments contain toxic substances, alternate chemicals are used, and in case of use of mild hazardous substance, it is neutralized in the laboratory (by adapting Standard Operating Procedure) and flushing water sufficiently .




- Biomedical waste management:** As per the guidelines, the biomedical wastes are collected in yellow bags. Then bags are taken to Common Biomedical Waste Treatment Facility (CBWTF) or a waste-to-energy plant.



- **e-Waste Management:** All electronic e-waste materials like memory chips, motherboard, cartridges, computers, printers, Fax, compact discs, floppy etc. generated by the Computer Lab, Electronics Lab and Physics Lab are collected centrally and sent to the university (for the Institute is part of the university).



- **Hazardous Chemicals and Radioactive Waste Management:** Either the Basic Science Courses or the Applied Courses do not contain the experiments which uses the Radioactive materials or the highly hazardous chemicals in their curriculum.


-Principal,
Karnatak Science College
Dharwad.